

# CREATE CAPITAL

## THROUGH SUSTAINABILITY



**revel-energy.com**

E: [Info@revel-energy.com](mailto:Info@revel-energy.com) | T: 949-281-7171

EPC & Project Developer  
CSLB #1106092



**Revel Energy** delivers energy solutions, specializing in **solar, energy storage, and EV charging** for C&I.

Using a data-driven approach, Revel optimizes energy use to **create capital through sustainability**.



**On-time, on-budget  
project delivery**

**Custom energy systems  
for each facility**

**Immediate savings with  
optimized execution**

**revel-energy.com**

E: [Info@revel-energy.com](mailto:Info@revel-energy.com) | T: 949-281-7171

EPC & Project Developer  
CSLB #1106092

# | Mission

**Generate Revenue for California Businesses  
Through Dynamic Energy Solutions.**



## | Our Commitment to Quality & Safety

Revel delivers high-quality services with a focus on **safety, efficiency, and continuous improvement**.

We ensure projects **meet and exceed** customer expectations while maintaining a safe environment for employees and clients.

Committed to accident-free work, we uphold rigorous safety standards and invest in a skilled workforce to **drive success through reliable execution**.

**revel-energy.com**

E: [Info@revel-energy.com](mailto:Info@revel-energy.com) | T: 949-281-7171

EPC & Project Developer  
CSLB #1106092

# | Services & Solutions

## | Commercial Solar

Revel has specialized in commercial solar since 2010, providing custom solutions for each facility, ensuring maximum savings for high-ROI.

## | Energy Storage

Energy storage optimizes on-site solar generation and also drastically reduces peak demand charges.



## | EV Fleet Charging

EV fleet charging is increasingly essential, helping facilities meet demand and avoid fines.

## | Microgrid

Microgrids provide energy independence and control costs by optimizing power management.

## | Revel Energy Goes Further

### Solutions Expertise:

- Battery Backup Resilience
- Building Management / Demand Controls
- HVAC
- LED retrofit
- Cool Roofs (Title-24 Compliance)
- SCAQMD Rule 2305 (WAIRE Compliance)

### Financing Features:

- Bank Financing
- Power Purchase Agreement (PPA)
- Solar Tax Credit (ITC)
- Federal & State Asset Depreciation

**revel-energy.com**

E: [Info@revel-energy.com](mailto:Info@revel-energy.com) | T: 949-281-7171

EPC & Project Developer  
CSLB #1106092

# | Team Qualifications

Revel Energy boasts an experienced team of professionals, with over 100 years of combined experience in Renewable Energy, General Contracting, and Construction, and a proven track record of accomplishments in Southern California and beyond.



## **Alan H. Lee, CEO**

Innovator and entrepreneur in the renewables sector, Alan specializes in project development and financing industrial energy projects on a global scale.

Since 2006, Alan has specialized in applying renewable principals to the areas of corporate governance, strategic planning, and business development, in an ongoing effort to turn infrastructures everywhere from gray to green.



## **Martin Brix, VP of Solutions**

A thought leader in the solar industry, Martin has over 15 years of hands-on experience in designing renewable energy solutions.

Using his in-depth knowledge of energy infrastructure, he creates unique opportunities for clients, accomplishing the trifecta of sustainable energy solutions: increasing capital, improving the environment, and creating a better community.



## **Mehmet Cercioğlu, VP of Business Development**

A proven expert in the solar industry, Mehmet has had the distinction of working on some of California's largest commercial and agricultural solar projects.

Core skills he's honed from his past 10 years of experience include solar PV project development, project finance, system design, interconnection, utility policies and market strategies, strategic planning, and overall cost reduction initiatives.



## **Kristina Shellito, Director of Project Development**

Innovative Director of Project Development, Kristina uses her expertise in renewable energy to forge new business partnerships.

She has critical experience leading projects, programs, and initiatives for start-up and global organizations for more than 10 years. Collaboratively influencing cross-functional efforts, stimulating income generating activities, and piloting revenue and profit growth.

# Team Qualifications



## **John McIntosh, Senior Engineer, RME**

With over 25 years of solar engineering experience, John has a key role in designing and optimizing solar and storage solutions across California.

As a licensed C-10 Electrical Contractor, he ensures all projects meet the highest standards of efficiency, reliability, safety, and code compliance. His expertise helps deliver high-performance solutions to maximize savings and sustainability.



## **William Hsien, Project Manager**

William is a graduate of University of California Berkeley with a BA in Architecture and has been certified under the CSLB as a General Building Contractor (B).

His architectural and design-build construction background gives him the ability to efficiently design and manage commercial solar projects of various scopes, managing & completing some of California's largest commercial and agricultural solar projects.



## **Paul Bakhoun, VP of Operations**

Paul oversees the day-to-day operations, with over 10 years of solar experience he has been instrumental in Revel's growth while managing procurement, logistics and cost-down initiatives.

## Insurance Coverage

Revel is fully insured, with coverage for the following, or as required per contract:

- Workers Compensation
- General Liability
- Vehicle Liability
- Personal Injury
- Builder's Risk

## Licenses & Certifications

- Classification B - General Building Contractor
- Classification C46 - Solar
- Classification C10 - Electrical Contractor

# | Key Industries: Food Processing



**Hokto Kinoko**  
San Marcos, CA



**Golden Road Brewing**  
Anaheim, CA



**Harmoni Intl. Spice**  
City of Industry, CA



**Restaurant Group**  
Rosemead, CA



**4Earth Farms**  
Commerce, CA



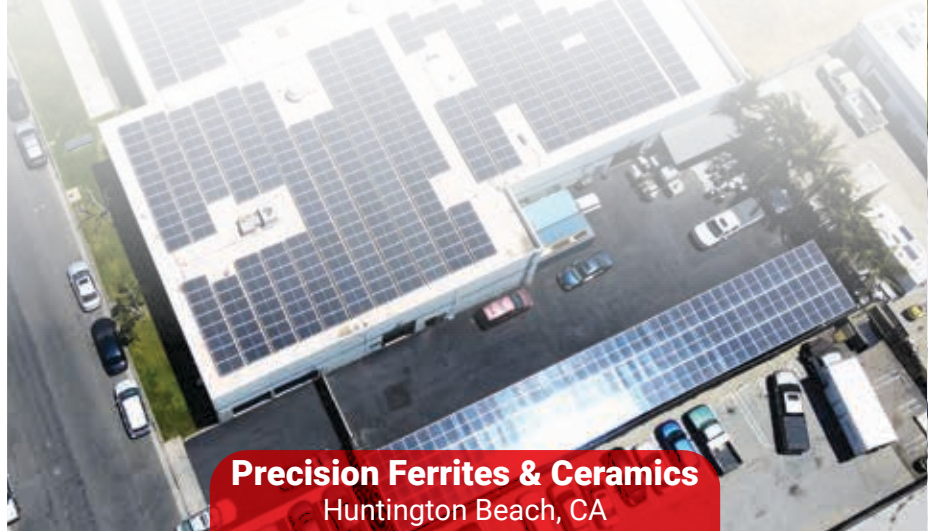
**American Jerky Co.**  
Ontario, CA

**revel-energy.com**

E: [Info@revel-energy.com](mailto:Info@revel-energy.com) | T: 949-281-7171

EPC & Project Developer  
CSLB #1106092

# | Key Industries: Manufacturing



**revel-energy.com**

E: [Info@revel-energy.com](mailto:Info@revel-energy.com) | T: 949-281-7171

EPC & Project Developer  
CSLB #1106092

# Key Industries: Plastics & Packaging



**Orange County Industrial Plastics**  
Anaheim, CA



**Nubs Plastics**  
Vista, CA



**Pacific Quality Packaging**  
Brea, CA



**Green Bay Packaging**  
Redlands, CA

**revel-energy.com**

E: [Info@revel-energy.com](mailto:Info@revel-energy.com) | T: 949-281-7171

EPC & Project Developer  
CSLB #1106092

# Key Industries: Agriculture



**California Vineyards**  
Bakersfield, CA



**Dairy Farm**  
Pixley, CA



**Long Life Farms**  
Thermal, CA



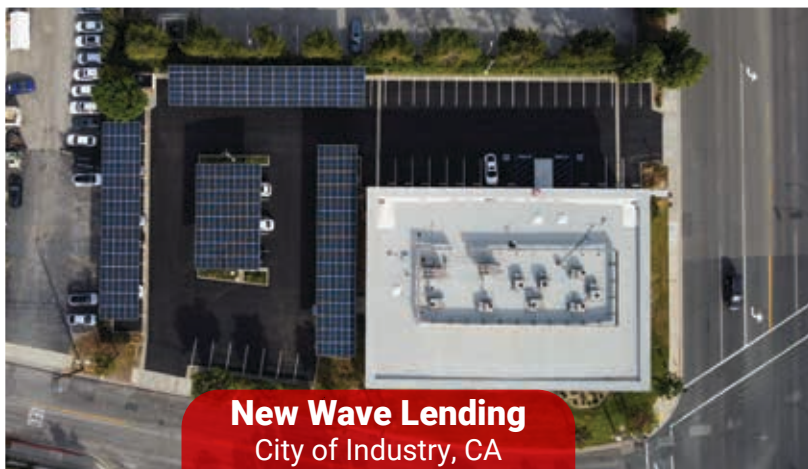
**Pacific Date Corp.**  
Thermal, CA

**revel-energy.com**

E: [Info@revel-energy.com](mailto:Info@revel-energy.com) | T: 949-281-7171

EPC & Project Developer  
CSLB #1106092

# Key Industries: Commercial



**revel-energy.com**

E: [Info@revel-energy.com](mailto:Info@revel-energy.com) | T: 949-281-7171

EPC & Project Developer  
CSLB #1106092

# Project Portfolio Statistics



OVER  
**10**  
YEARS

INDUSTRY EXPERIENCE

PROJECTS  
COMPLETED

**40+**

REVEL TEAM EXPERIENCE

**100+** MW  
SOLAR SOLUTIONS  
INSTALLED

**75+** MWh  
ENERGY STORAGE  
DEPLOYED

**\$100+**  
MILLION

CUSTOMER SAVINGS

**\$0** UPFRONT  
FINANCING

**75%** AVERAGE  
REDUCTION  
OF PEAK

DEMAND CHARGES

**100%**

- OSHA - COMPLIANT
- CODE - COMPLIANT
- SUSTAINABILITY - CERTIFIED

SYSTEM  
**99%**  
UPTIME

**245%**  
AVERAGE ROI

**25 YR**  
PRODUCT & PERFORMANCE  
WARRANTY

AVERAGE  
**80%**  
ENERGY BILL  
REDUCTION

**revel-energy.com**

E: Info@revel-energy.com | T: 949-281-7171

EPC & Project Developer  
CSLB #1106092