

# COMMERCIAL SOLAR PLUS ENERGY STORAGE PROJECT CASE STUDY



## LOTUS LABELS

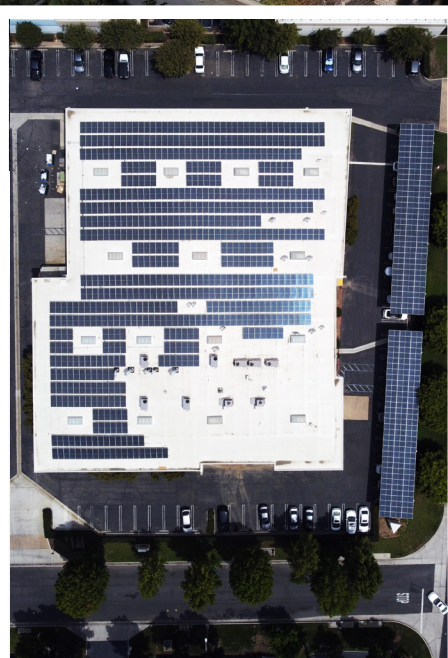
Specialty Label Printing  
Brea, CA

Rooftop Carport Fixed-Tilt Solar + Energy Storage

\$4M Lifetime Electricity Savings

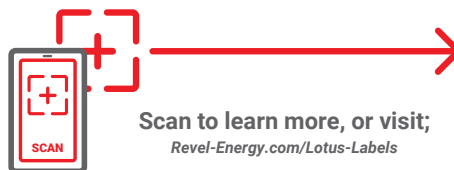
350 kW + (250 kW ESS) System Capacity

**84% Energy Offset**



**revel-energy.com**

E: [Info@revel-energy.com](mailto:Info@revel-energy.com) | T: 949-281-7171





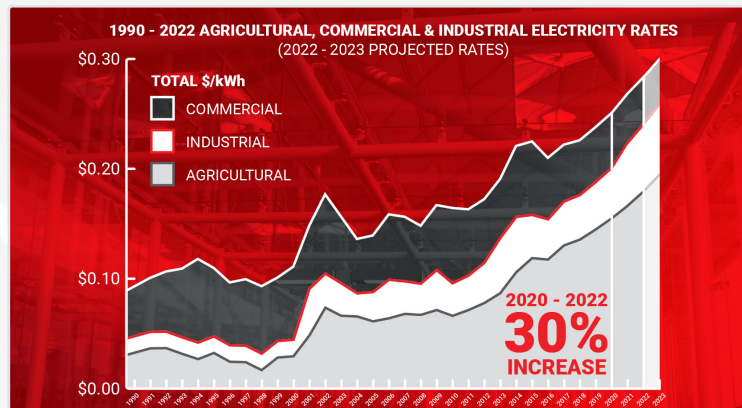
# COMMERCIAL SOLAR PLUS ENERGY STORAGE PROJECT CASE STUDY



**THIS ROOFTOP & CARPORT SOLAR PLUS ENERGY STORAGE INSTALLATION IS A SUSTAINABLE ENERGY SOURCE FOR THIS COMMERCIAL LABEL PRINTER.**

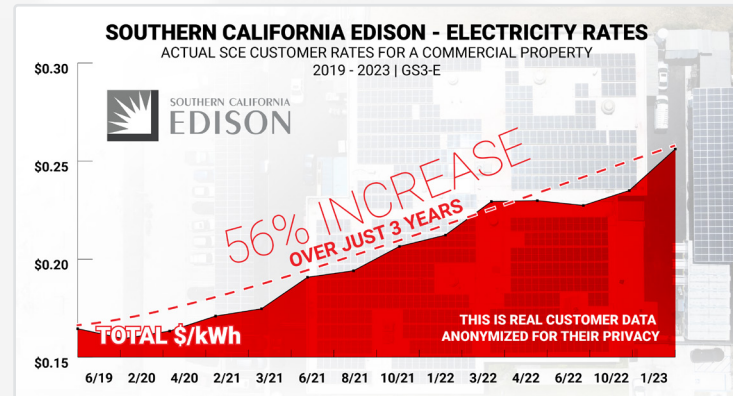
Headquartered in Brea, Lotus Labels strives to provide the highest quality, custom made-to-order labels to their customers. Committed to customer satisfaction, this commercial printer recognized an opportunity to reduce operating costs while increasing sustainability through rooftop and carport commercial solar paired with a energy storage system.

California has seen some of the highest electricity rate growth in the country, just as Lotus observed as they incurred higher and higher electricity bills. Facility growth has resulted in costly electricity bills that consistently rise past budgetary expectations.



Lotus Labels wanted to take control of their rising electricity costs and show their commitment to innovation and sustainability, so they tasked Revel Energy to design a custom energy solution for their facility.

Revel's project managers got started, working with Brea authorities and code enforcement to collect the necessary permits and certifications for efficient interconnection with Southern California Electric (SCE).



Revel's skilled development team and project managers designed and constructed the 350 kilowatt rooftop and carport system that uses 888 commercial solar panels and 9 SolarEdge inverters to offset 84% of the electricity that the building would typically use.

The system is estimated to produce about **\$4 million dollars in electricity savings** over its 30-year lifespan.

The cost-effective investment takes advantage of incentives and programs like the solar investment tax credit (ITC), net energy metering (NEM), state and federal bonus depreciation - this rooftop and carport solar plus storage solution quickly pays for itself.

Lotus Labels continues to establish their commitments to customer satisfaction, with this bold decision to look toward a more sustainable future for their business with commercial solar and energy storage.

Revel Energy's team of commercial, industrial and agricultural solar specialists offer turnkey solutions for California businesses to lower their electricity costs ultimately increasing cash flow.

For a free comprehensive energy analysis, contact a Revel Energy solar specialist today.

**revel-energy.com**

E: [Info@revel-energy.com](mailto:Info@revel-energy.com) | T: 949-281-7171

EPC & Project Developer  
CSLB #1038433