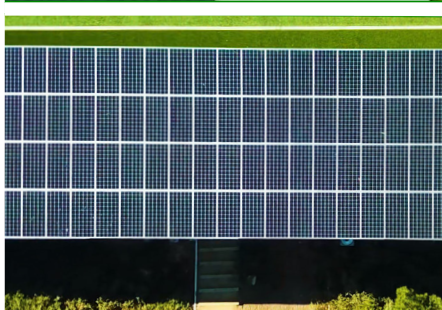


CASE STUDY



COX SPORTS PARK

Recreational Sports Fields
Ladera Ranch, CA

Solar Canopy

\$2.3M Lifetime Electricity Production

117 kW System Capacity

71% Energy Offset

revel-energy.com

E: Info@revel-energy.com | T: 949-281-7171



Scan to learn more, or visit;
Revel-Energy.com/Cox-Park



CASE STUDY

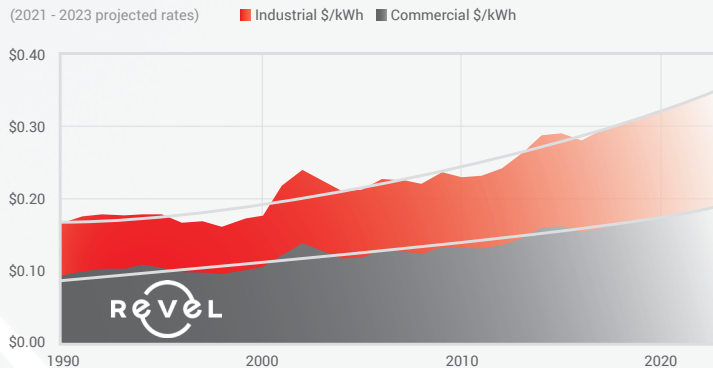


NET ENERGY METERING (NEM) HELPS COX SPORTS PARK IN LADERA RANCH, CA OFFSET ENERGY USAGE WHEN SUN IS DOWN.

With over 1 million interconnections in California, solar technology has established its place in offsetting significant energy use during the day, but how can solar help offset nighttime energy use?

Historically California businesses have experienced the highest electricity rate growth in the country. In recent years many California businesses have seen their rates more than double.

1990 - 2020 Historical CA C&I Energy Rates



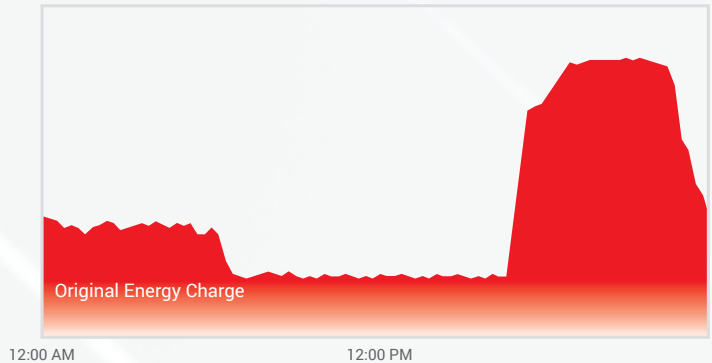
Cox Sports Park uses the most energy to light up the fields at night, not during the day thanks to artificial turf and efficient drip irrigation systems for shrubbery.

Non-profit owner/operator, Ladera Ranch Maintenance Corporation, wanted to take control of the electricity cost with solar so they teamed up with Revel Energy to design a custom solar canopy.

Revel's project managers got started, working with Ladera Ranch and Orange County authorities and code enforcement to collect the necessary certifications.

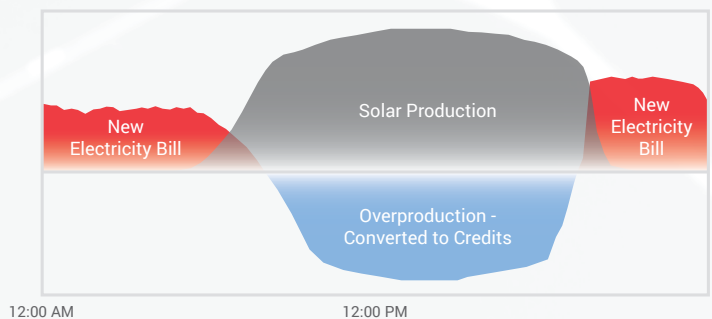
Revel installed a 117 kW canopy consisting of 324 solar panels that provide shade field-side as it generates energy. The system is expected to produce \$2.3M of electricity in its 30-year lifespan.

Electricity Profile WITHOUT SOLAR + NEM



Taking advantage of multiple benefits and programs like the Solar Investment Tax Credit (ITC) and Net Energy Metering (NEM), Cox Park's new system offsets 71% of their electricity use by earning credits for overproduction during the day that pays for use at night when lighting up the fields.

Electricity Profile WITH SOLAR + NEM



Revel Energy's team of commercial and agricultural solar specialists offer turnkey solutions for California businesses to lower their electricity costs ultimately increasing cash flow.

revel-energy.com

E: Info@revel-energy.com | T: 949-281-7171

EPC & Project Developer
CSLB #1038433